

# COSY+ Routers

We are delighted to announce the release of the COSY+ Router Series.



# The new generation

Following the success of the Cosy 131, the Cosy+ is the new generation of Ewon industrial remote access gateway, made even more secure and easy to use.

With its embedded hardware security chip and updated authentication and encryption protocols, the Cosy+ provides state of the art end-to-end security for remote access of automation devices through the Talk2M cloud service.

Meanwhile, its enhanced firmware management options and upgraded commissioning system make it even easier to deploy and maintain.

- This document is designed to help customers to understand the implications of applying the new generation Cosy+ products: The physical installation of the Cosy+ is the same as for the Cosy 131 product (same casing, same mounting and same power supply & connectors)
- The software configuration of the Cosy+ is very similar to the Cosy 131 product. It involves several security enhancement and details are listed below



Cosy +	Ethernet	WiFi	Cellular 4G
Product Ref.	EC71330	EC7133J	EC7133L
Replacement for	EC61330	EC6133C	EC6133G
WAN connectivity	LAN / WAN	LAN / WAN / WIFI	LAN / WAN 4G EU
Ethernet		4 configurable LAN/WAN ports	
USB			
Input / Output		2x DI, 1x DO	
SD card reader		✔	
Power Supply		12-24 V DC +/-20%, LPS	
Temperature range		-25°C to +60°C	
Marking		CE, UL, FCC, IC	
Warranty		36 months	
Mechanical Standards & Directives	Download Ewon Cosy+ datasheet: <a href="https://ewon.biz/products/cosy">https://ewon.biz/products/cosy</a>		

You will find a comparison of COSY 131 and COSY+ below.

# Comparison of Cosy 131 and Cosy+

The following table contains an overview of the similarities and differences between Cosy 131 and Cosy+. All differences are explained in more detail later in this document.

	Cosy 131	Cosy+
Mechanicals	Dimensions : 108,80 x 99 x 43,60 mm (H x D x W) DIN rail or wall screw fixing system	
Power Supply	12-24 VDC +/-20%, LPS	
Ethernet	4 Configurable LAN/WAN ports	
Field Interface	USB 2.0	
SD Card Reader	For commissioning (firmware upgrade, backup, Talk2M registration)	
Temperature Range	-25°C to +60°C	
Talk2M	Talk2M Free+ or Talk2M Pro, natively supported	
VPN Security	Standard	Enhanced
eCatcher Easy Setup Configuration (SD/USB)	Standard	Enhanced: password, time settings, and language are configurable
Web-based Configuration	Embedded web interface with setup wizards for configuration and maintenance (no additional software needed)	
Local connectivity control	Enable Remote Access only when DI1 is enabled	
Digital Inputs	DI1/DI2 Notification (Email and SMS)	
Digital Output	On when Cosy connected to Talk2M (VPN connection established)	On when User connected through Talk2M (eCatcher or M2Web)
T2M LED	On when Cosy connected to Talk2M (VPN connection established)	On when Cosy connected to Talk2M, blinking when User connected through Talk2M (eCatcher or M2Web)
Password Management	Standard	Enhanced: mandatory adm password change, password not reset in level 1 reset
Firmware Update	Using eBuddy	Embedded firmware update feature inside GUI*
Backup/Restore	Standard	Enhanced: backups do not include VPN keys. The Talk2M Wizard must be rerun after restoring a backup.

\*Coming soon: Update the Cosy+ using the firmware Update feature inside eCatcher.

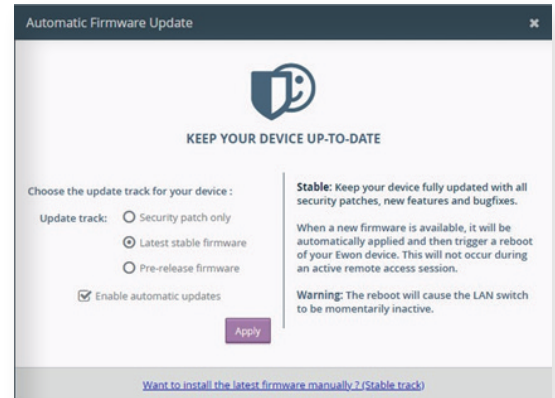
# New Firmware Update Process

eBuddy is not used for firmware updates with the Cosy+. Instead, a new **Firmware Update** option has been added to the Setup menu of the web interface of the Cosy+. From this option, users can manually update the firmware of their Cosy+ or configure it to automatically retrieve and apply firmware updates.

The Cosy+ can be configured to:

- Automatically apply only security patches
- Automatically apply the most recent official release
- Automatically apply the most recent release, including pre-release firmware.

*NOTE: Pre-release firmware should be applied to units only for testing purposes unless told otherwise by a support representative*



## Security Enhancements

The Cosy+ has been designed to have state of the art security capabilities. Most of these security enhancements, such as a built-in secure element chip and new mechanisms to prevent cloning and counterfeiting, will be invisible to users. There are, however, a few things that users may notice.

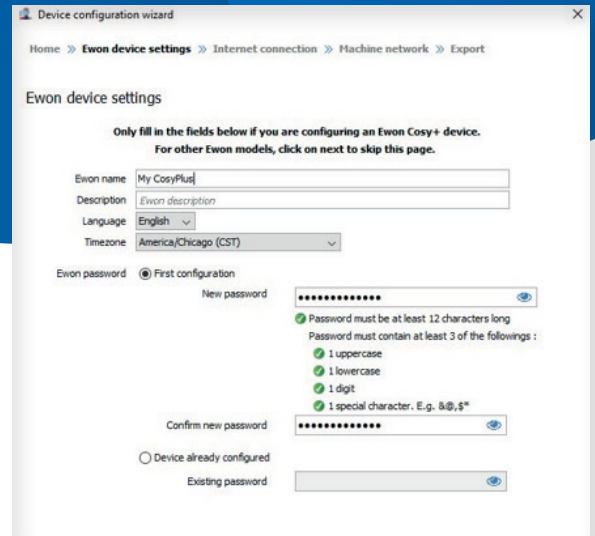
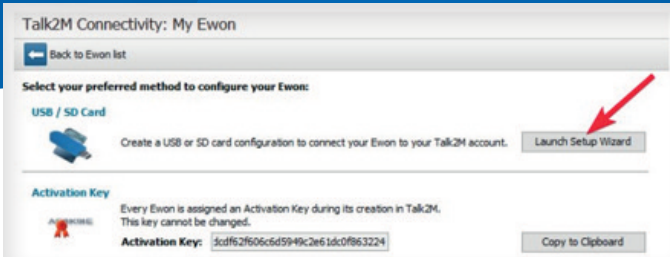
These include:

- **Mandatory Adm Password Change**  
The password of a Cosy+ must be changed and cannot be kept as the default "adm". The password can be changed as part of the "Easy Setup" (see below) or during the first access to the Cosy+ configuration webpage
- **Password retained after Level 1 Reset**  
In the Cosy 131, the adm password is reset to its default setting as part of a level 1 reset. For the Cosy+, the password is not changed with a level 1 reset; it only is reset as part of a level 2 reset.
- **No VPN Keys in Backup**  
The VPN Keys are not included in a backup of a Cosy+. If a user resets their Cosy+ and then restores a backup, the user will need to rerun the Talk2M wizard on the Cosy+.
- **The password of the Cosy+ must be at least 12 characters long and respect 3 of the following conditions:**
  - include at least one lowercase character,
  - include at least one upper case character,
  - include at least one digit,
  - include at least one special character.
- **Secure Boot Sequence**  
The Cosy+ has a secure boot sequence to ensure that only code signed by Ewon is executed. This new boot sequence is longer than the boot sequence of the Cosy 131 and during the majority of the sequence the USR LED will be OFF.

# eCatcher Easy Setup Configuration Enhancements

Users using the eCatcher Easy Setup to configure their Cosy+ no longer need to run the System Wizard in the web interface after applying the configuration files via SD card or USB flash drive. For a Cosy+, the System settings such as the date and time settings, language settings, and adm password, can be configured as part of the **eCatcher Easy Setup Wizard**.

*NOTE: This requires eCatcher version 6.8.4PR or later.*



## New Talk2M Connection Indicators

On a Cosy+, the T2M LED and the state of the DO reflect when a user is connected through Talk2M.

Condition	Cosy 131	Cosy+
Ewon device not connected to Talk2M	T2M LED: OFF DO: OFF	T2M LED: OFF DO: OFF
Ewon device connected to Talk2M but no user is connected	T2M LED: steady green <b>DO: ON</b>	T2M LED: steady green <b>DO: OFF</b>
Ewon device is connected to Talk2M and a user is connected	<b>T2M LED: steady green</b> DO: ON	<b>T2M LED: blinking green</b> DO: ON

### Yaskawa Europe GmbH

Drives Motion Controls Division  
Hugo-Junkers Str. 13  
90411 Nürnberg  
Germany

### Vipa Controls America

980 Birmingham Rd Ste 721  
Alpharetta, GA 30004  
+1.678.880.6910  
info@vipausa.com  
www.vipausa.com

02/2023