

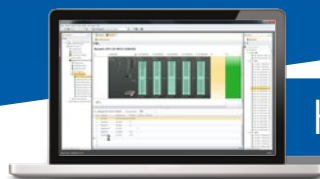
**YASKAWA**

# SPEED7 Studio

Integrated Smart Engineering Tool



# Integrated engineering



## HARDWARE CONFIGURATION

Already during hardware configuration, SPEED7 Studio simplifies and facilitates your work. You save on time-consuming training immediately because of: clever Drag & Drop functions, tool tips, photo realistic display of the modules.

Numerous features support you during project engineering like the following examples from the large scope of functions: the automatic calculation of the current demand in the SLIO system, the integrated SPEED bus module, the online display of the digital I/Os.



## PROGRAMMING

S7 editors and debug tools for IL, FBD and LAD are the instruments for programming with SPEED7 Studio. They are particularly easy to understand by means of: clearly structured color schema, clearly identified hierarchy levels, a cross-reference list, and many other features.

Diagnosis by means of module status and observation charts is possible - even with history and trend display.

”

*We want to optimize  
reduce the efforts for de  
and save time and cos  
training. The user can  
engineer*

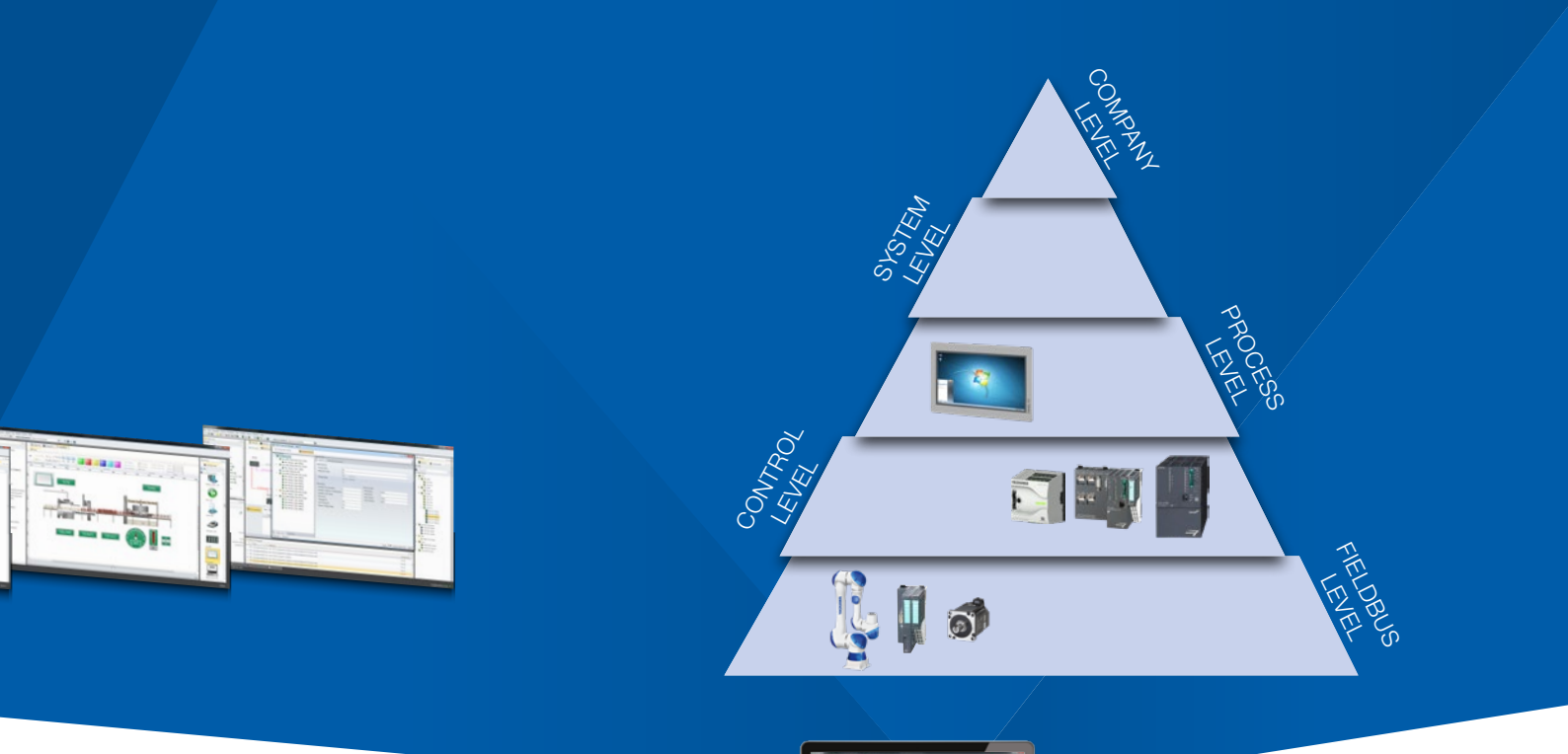


## NETWORKING

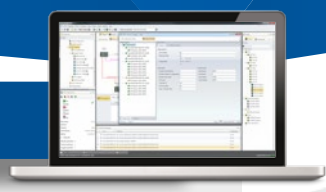
SPEED7 Studio makes networking via: PROFIBUS, PROFINET, EtherCAT, Standard-Ethernet and S7 connections consistently logical.

Independent from the bus protocol the topology view is always the same. Therefore the network configuration and the user allocation can be done quickly and easily. This combination of the standard STEP7 world and the EtherCAT world offers an unprecedented overview and reduces effort enormously.





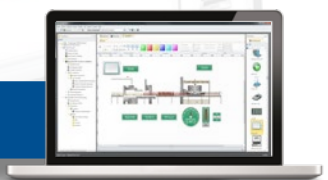
## DIAGNOSIS



Extensive test and diagnostic functions of YASKAWA CPUs, and the fieldbus systems PROFIBUS, PROFINET, and EtherCAT result in efficient and constructive trouble shooting in SPEED7 Studio. Considerably simplified access to EtherCAT by: automatic reading of the connected EtherCAT hardware, fast and clear project engineering and parameterization, complete network diagnosis.

The integrated PLC and HMI simulation bring following simplifications: A clear and structured test of complex systems beforehand, extreme simplification of the fault diagnosis through the newly developed real time recordings of the data points from the PLC, even at sporadically occurring faults. Besides this you can make a detailed analysis with the fully integrated logic analyzer.

## VISUALIZATION



There are two visualization options:  
 The web-based version with vector oriented graphics for the site and runtime independent access on your machines and plants via panel, laptop, smart-phone and tablet PC.  
 The second version with the option of implementing extensive visualizations via SCADA interface.

With the joint variable household all project variables can be used with SPEED7 Studio for the visualization without interface loss.

*the automation tasks development to a minimum not on intensive software get back to his current tasks.* ”

## SUPPORTED SYSTEMS

YASKAWA PLCs (MICRO, 200V, SLIO, 300S+) all YASKAWA Panels, YASKAWA inverters (A1000, GA700, etc.) as well as SIGMA5 and SIGMA7 Servo Drives

# Tailor-made for you



## The SPEED7 Studio – License model

### PRO

- + All functions of the BASIC version
- + Axis configuration for Inverters and Servo Drives
- + PLCopen function blocks

- + CAM editor with CAM profiles according to VDI 2145
- + Logic analyzer for fast trouble shooting

### BASIC

- + All functions of the LITE version
- + SCADA System Movicon for ALL VIPA Panels & PanelPCs
- + Access to SigmaWin+

- + S7 program without any memory limitation for ALL YASKAWA PLCs
- + Access to DriveWizard Plus

### LITE

- Support of ALL YASKAWA PLCs with a S7 program size up to 128 KB
- WebVisualization for ALL YASKAWA PLCs
- PLC and HMI simulation integrated
- S7 editors for STL, FBD and LAD



Modbus RTU  
ASCII  
STX/ETX  
PROFIBUS  
MPI



Modbus TCP  
PROFINET  
EtherCAT  
S7-COM

**30**  
days demo

Test our engineering tool for 30 days in FULL functionality (PRO). After the expiry you can decide for one of the three license versions.

#### VIPA ControlsAmerica

980 Birmingham Rd. Ste 721  
Alpharetta, GA 30004, USA

Tel.: +1 (678) 880-6910  
E-Mail: info@vipausa.com

www.vipausa.com

MEX: +52 (55) 8526-6442  
ventas@vipausa.com

© YASKAWA GmbH. All rights reserved.

#### YASKAWA Europe GmbH

Drives Motion Controls  
Ohmstraße 4  
91074 Herzogenaurach  
Germany

<https://www.yaskawa.eu.com/products/plc-control-systems>

05/2022

**YASKAWA**